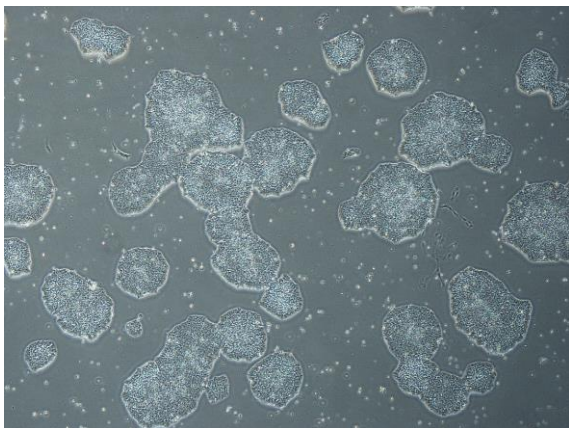
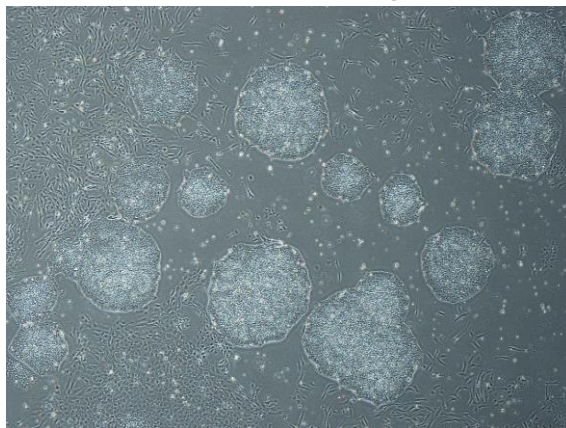


## 【 CiRA-j-1165 】 Morphology of iPSC colonies

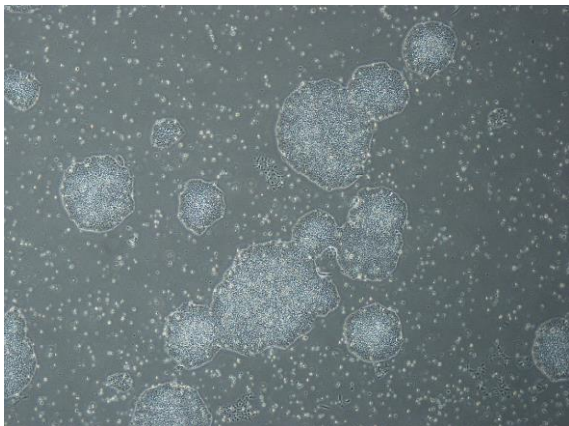
CiRA-j-1165-A: passage-3



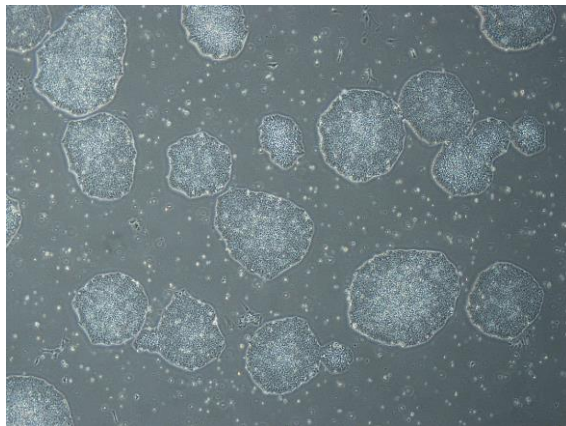
CiRA-j-1165-B: passage-3



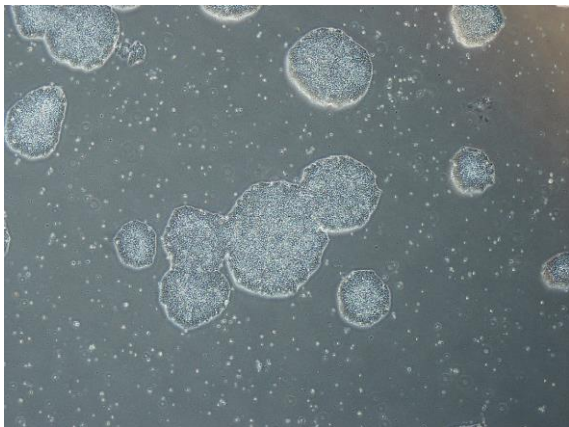
CiRA-j-1165-C: passage-3



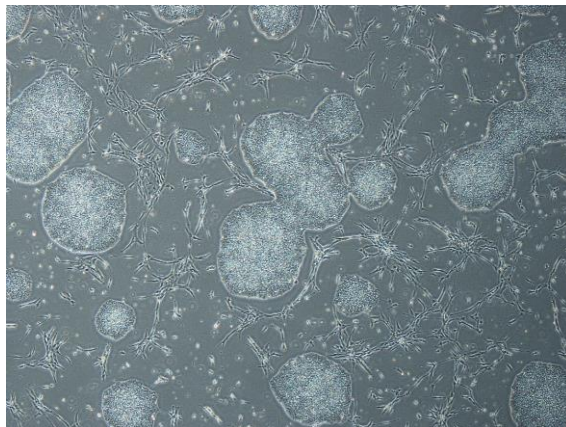
CiRA-j-1165-D: passage-3



CiRA-j-1165-E: passage-3



CiRA-j-1165-F: passage-3



( All images were captured at 4x magnification )